

# **INSIDE THE CIRCLE:**

## **A PROVEN METHOD FOR A SUCCESSFUL MARCHING BAND**

*By Matt and Ben Harloff*

**WOODWIND CHAPTER**

**CLARINET PART**

*2nd Edition*

# TABLE OF CONTENTS

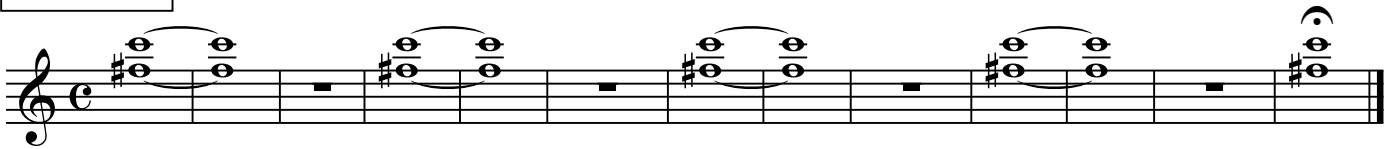
Mouthpiece Exercises.....	Page 3
Embouchure Development.....	Page 4
• Exercise #1-Perfect 4th, Low-High: Page 4	
• Exercise #1a-Perfect 4th, Low-High: Page 4	
• Exercise #2-Perfect 5th, Low-High: Page 4	
• Exercise #2a-Perfect 5th, Low-High: Page 5	
• Exercise #3-Minor 6th, Low-High: Page 5	
• Exercise #3a-Minor 6th, Low-High: Page 5	
• Exercise #4-Perfect 4th, High-Low: Page 6	
• Exercise #4a-Perfect 4th, High-Low: Page 6	
• Exercise #5-Perfect 5th, High-Low: Page 6	
• Exercise #5a-Perfect 5th, High-Low: Page 7	
• Exercise #6-Minor 6th, High-Low: Page 7	
• Exercise #6a-Minor 6th, High-Low: Page 7	
Fingering Exercises.....	Page 8
• 4 Note Cells-Patterns A-L: Page 8-9	
• 6 Note Cells-Patterns A-L: Page 10-13	
Trill Exercises.....	Page 14
• Key of Eb Trills: Page 14	
• Key of F Trills: Page 17	
• Trill Eb and Bb Major Chord: Page 21	
• Trill F and C Major Chord: Page 21	
Intonation Exercises.....	Page 22
• Fundamental Tuning Notes: Page 22	
• Bb Tuning (Equal Temperament): Page 22	
• Bb Tuning (Just Intonation): Page 22	
• F Tuning (Equal Temperament and Just Intonation): Page 23	
• Eb Tuning (Equal Temperament and Just Intonation): Page 23	
• Ab Tuning (Equal Temperament and Just Intonation): Page 24	
• C Tuning (Equal Temperament and Just Intonation): Page 24	

# Mouthpiece Exercises

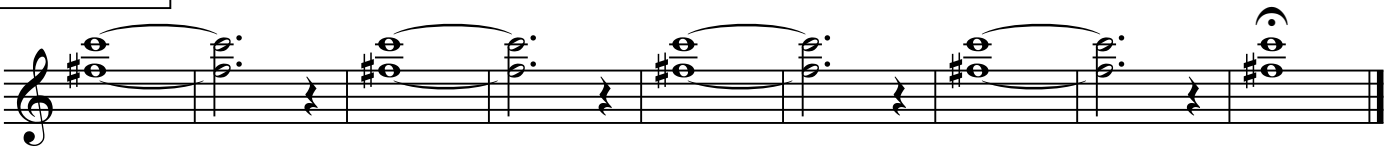
Please note: All notes are concert pitch

F# = with barrel ... C = without barrel

## Exercise #1



## Exercise #2



## Exercise #3



# Embouchure Development

Exercise #1 - Perfect 4th Low-High



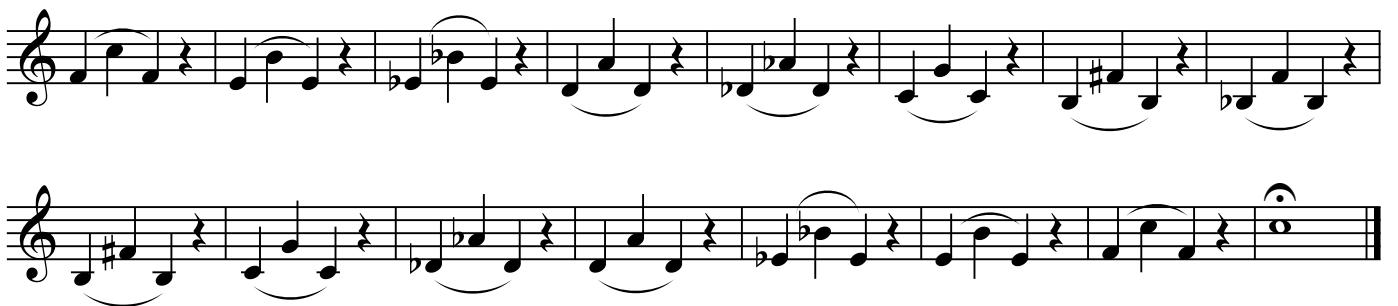
Exercise #1 consists of two staves of music in 4/4 time. The first staff contains eight measures of music, each starting with a quarter rest followed by a pair of eighth notes. The notes in each measure are: (C4, D4), (D4, E4), (E4, F4), (F4, G4), (G4, A4), (A4, B4), (B4, C5), and (C5, B4). The second staff contains eight measures, each starting with a quarter rest followed by a pair of eighth notes. The notes in each measure are: (B3, A3), (A3, G3), (G3, F3), (F3, E3), (E3, D3), (D3, C3), (C3, B2), and (B2, A2). The final note of the second staff is a whole note.

Exercise #1a - Perfect 4th Low-High



Exercise #1a consists of two staves of music in 4/4 time. The first staff contains eight measures, each starting with a quarter rest followed by a pair of eighth notes. The notes in each measure are: (C4, D4), (D4, E4), (E4, F4), (F4, G4), (G4, A4), (A4, B4), (B4, C5), and (C5, B4). The second staff contains eight measures, each starting with a quarter rest followed by a pair of eighth notes. The notes in each measure are: (B3, A3), (A3, G3), (G3, F3), (F3, E3), (E3, D3), (D3, C3), (C3, B2), and (B2, A2). The final note of the second staff is a whole note.

Exercise #2 - Perfect 5th Low-High



Exercise #2 consists of two staves of music in 4/4 time. The first staff contains eight measures, each starting with a quarter rest followed by a pair of eighth notes. The notes in each measure are: (C4, D4), (D4, E4), (E4, F4), (F4, G4), (G4, A4), (A4, B4), (B4, C5), and (C5, B4). The second staff contains eight measures, each starting with a quarter rest followed by a pair of eighth notes. The notes in each measure are: (B3, A3), (A3, G3), (G3, F3), (F3, E3), (E3, D3), (D3, C3), (C3, B2), and (B2, A2). The final note of the second staff is a whole note.

**INSIDE THE CIRCLE: A PROVEN METHOD FOR A SUCCESSFUL MARCHING BAND**

**WOODWIND CHAPTER: CLARINET PART (2nd ed.)**

*by Matt and Ben Harloff*

**Embouchure Development**

**Exercise #2a - Perfect 5th Low-High**

Exercise #2a - Perfect 5th Low-High

Musical notation for Exercise #2a - Perfect 5th Low-High. The exercise consists of two staves of music. The first staff contains eight measures of music, and the second staff contains eight measures. The notes are: G4, A4, B4, C5, D5, E5, F5, G5. The notes are grouped into pairs of eighth notes with a slur over each pair. The key signature has one flat (Bb) and the time signature is 2/4. The exercise is a perfect fifth interval exercise.

**Exercise #3 - Minor 6th Low-High**

Exercise #3 - Minor 6th Low-High

Musical notation for Exercise #3 - Minor 6th Low-High. The exercise consists of two staves of music. The first staff contains eight measures of music, and the second staff contains eight measures. The notes are: G4, Bb4, C5, D5, E5, F5, G5. The notes are grouped into pairs of eighth notes with a slur over each pair. The key signature has two flats (Bb, Eb) and the time signature is 2/4. The exercise is a minor sixth interval exercise.

**Exercise #3a - Minor 6th Low-High**

Exercise #3a - Minor 6th Low-High

Musical notation for Exercise #3a - Minor 6th Low-High. The exercise consists of two staves of music. The first staff contains eight measures of music, and the second staff contains eight measures. The notes are: G4, Bb4, C5, D5, E5, F5, G5. The notes are grouped into pairs of eighth notes with a slur over each pair. The key signature has two flats (Bb, Eb) and the time signature is 2/4. The exercise is a minor sixth interval exercise.

INSIDE THE CIRCLE: A PROVEN METHOD FOR A SUCCESSFUL MARCHING BAND

WOODWIND CHAPTER: CLARINET PART (2nd ed.)

by Matt and Ben Harloff

Embouchure Development

Exercise #4 - Perfect 4th High-Low

Musical notation for Exercise #4 - Perfect 4th High-Low. The exercise consists of two staves of music. The first staff contains eight measures of music, and the second staff contains eight measures. The notes are: G4, A4, B4, C5 (quarter notes); G4, A4, B4, C5 (quarter notes); F#4, G4, A4, B4 (quarter notes); F4, G4, A4, B4 (quarter notes); E4, F4, G4, A4 (quarter notes); D4, E4, F4, G4 (quarter notes); C4, D4, E4, F4 (quarter notes); B3, C4, D4, E4 (quarter notes). The second staff continues with: D4, E4, F4, G4 (quarter notes); A4, B4, C5, B4 (quarter notes); A4, G4, F4, E4 (quarter notes); D4, C4, B3, A3 (quarter notes); G3, F3, E3, D3 (quarter notes); C3, B2, A2, G2 (quarter notes); F2, E2, D2, C2 (quarter notes); B1, A1, G1, F1 (quarter notes).

Exercise #4a - Perfect 4th High-Low

Musical notation for Exercise #4a - Perfect 4th High-Low. The exercise consists of two staves of music. The first staff contains eight measures of music, and the second staff contains eight measures. The notes are: G4, A4, B4, C5 (quarter notes); G4, A4, B4, C5 (quarter notes); F#4, G4, A4, B4 (quarter notes); F4, G4, A4, B4 (quarter notes); E4, F4, G4, A4 (quarter notes); D4, E4, F4, G4 (quarter notes); C4, D4, E4, F4 (quarter notes); B3, C4, D4, E4 (quarter notes). The second staff continues with: D4, E4, F4, G4 (quarter notes); A4, B4, C5, B4 (quarter notes); A4, G4, F4, E4 (quarter notes); D4, C4, B3, A3 (quarter notes); G3, F3, E3, D3 (quarter notes); C3, B2, A2, G2 (quarter notes); F2, E2, D2, C2 (quarter notes); B1, A1, G1, F1 (quarter notes).

Exercise #5 - Perfect 5th High-Low

Musical notation for Exercise #5 - Perfect 5th High-Low. The exercise consists of two staves of music. The first staff contains eight measures of music, and the second staff contains eight measures. The notes are: G4, A4, B4, C5 (quarter notes); G4, A4, B4, C5 (quarter notes); F#4, G4, A4, B4 (quarter notes); F4, G4, A4, B4 (quarter notes); E4, F4, G4, A4 (quarter notes); D4, E4, F4, G4 (quarter notes); C4, D4, E4, F4 (quarter notes); B3, C4, D4, E4 (quarter notes). The second staff continues with: D4, E4, F4, G4 (quarter notes); A4, B4, C5, B4 (quarter notes); A4, G4, F4, E4 (quarter notes); D4, C4, B3, A3 (quarter notes); G3, F3, E3, D3 (quarter notes); C3, B2, A2, G2 (quarter notes); F2, E2, D2, C2 (quarter notes); B1, A1, G1, F1 (quarter notes).

**INSIDE THE CIRCLE: A PROVEN METHOD FOR A SUCCESSFUL MARCHING BAND**

**WOODWIND CHAPTER: CLARINET PART (2nd ed.)**

*by Matt and Ben Harloff*

**Embouchure Development**

**Exercise #5a - Perfect 5th High-Low**

Exercise #5a - Perfect 5th High-Low

Musical notation for Exercise #5a - Perfect 5th High-Low. The exercise consists of two staves of music. The first staff contains 12 measures of music, and the second staff contains 12 measures. The music is written in treble clef and 2/4 time. It features a sequence of eighth notes with slurs, alternating between high and low notes, illustrating a perfect fifth interval. The notes are: G4, A4, B4, C5, B4, A4, G4, F4, E4, D4, C4, B3. The key signature has one sharp (F#).

**Exercise #6 - Minor 6th High-Low**

Exercise #6 - Minor 6th High-Low

Musical notation for Exercise #6 - Minor 6th High-Low. The exercise consists of two staves of music. The first staff contains 12 measures of music, and the second staff contains 12 measures. The music is written in treble clef and 2/4 time. It features a sequence of eighth notes with slurs, alternating between high and low notes, illustrating a minor sixth interval. The notes are: G4, F#4, E4, D4, C4, B3, A3, G3, F#3, E3, D3, C3. The key signature has one sharp (F#).

**Exercise #6a - Minor 6th High-Low**

Exercise #6a - Minor 6th High-Low

Musical notation for Exercise #6a - Minor 6th High-Low. The exercise consists of two staves of music. The first staff contains 12 measures of music, and the second staff contains 12 measures. The music is written in treble clef and 2/4 time. It features a sequence of eighth notes with slurs, alternating between high and low notes, illustrating a minor sixth interval. The notes are: G4, F#4, E4, D4, C4, B3, A3, G3, F#3, E3, D3, C3. The key signature has one sharp (F#).

# Fingering Exercises: 4 Note Cells

**Pattern A**                      A2                      A3                      A4

Pattern A consists of three measures labeled A2, A3, and A4. Each measure contains a four-note cell with a slur and repeat signs. The notes are: A2: Bb, A, G, F; A3: Bb, A, G, F; A4: Bb, A, G, F.

**Pattern B**                      B2                      B3                      B4

Pattern B consists of three measures labeled B2, B3, and B4. Each measure contains a four-note cell with a slur and repeat signs. The notes are: B2: Bb, A, G, F; B3: Bb, A, G, F; B4: Bb, A, G, F.

*Use alternate left hand Bb*

**Pattern C**                      C2                      C3                      C4

Pattern C consists of three measures labeled C2, C3, and C4. Each measure contains a four-note cell with a slur and repeat signs. The notes are: C2: F#, G, A, B; C3: F#, G, A, B; C4: F#, G, A, B.

*Use fork fingerings for F#*

**Pattern D**                      D2                      D3                      D4

Pattern D consists of three measures labeled D2, D3, and D4. Each measure contains a four-note cell with a slur and repeat signs. The notes are: D2: F#, G, A, B; D3: F#, G, A, B; D4: F#, G, A, B.

**Pattern E**                      E2                      E3                      E4

Pattern E consists of three measures labeled E2, E3, and E4. Each measure contains a four-note cell with a slur and repeat signs. The notes are: E2: F#, G, A, B; E3: F#, G, A, B; E4: F#, G, A, B.

**Pattern F**                      F2                      F3                      F4

Pattern F consists of three measures labeled F2, F3, and F4. Each measure contains a four-note cell with a slur and repeat signs. The notes are: F2: Bb, A, G, F; F3: Bb, A, G, F; F4: Bb, A, G, F.



INSIDE THE CIRCLE: A PROVEN METHOD FOR A SUCCESSFUL MARCHING BAND

WOODWIND CHAPTER: CLARINET PART (2nd ed.)

by Matt and Ben Harloff

Fingering Exercises: 4 Note Cells

Pattern G

G2

G3

G4

Keep Right Hand Down

Pattern H

H2

H3

H4

Pattern I

I2

I3

I4

Pattern J

J2

J3

J4

Keep Right Hand Down

Pattern K

K2

K3

K4

Pattern L

L2

L3

L4

# Fingering Exercises: 6 Note Cells

Pattern A

A2 A3

Musical notation for Pattern A, measures A2 and A3. The notation is in treble clef, 3/4 time, and consists of six eighth notes per measure. Measure A2 contains notes G4, A4, B4, C5, B4, A4. Measure A3 contains notes G4, A4, B4, C5, B4, A4. Both measures are repeated twice.

A4 A5 A6

Musical notation for Pattern A, measures A4, A5, and A6. The notation is in treble clef, 3/4 time, and consists of six eighth notes per measure. Measure A4 contains notes G4, A4, B4, C5, B4, A4. Measure A5 contains notes G4, A4, B4, C5, B4, A4. Measure A6 contains notes G4, A4, B4, C5, B4, A4. All three measures are repeated twice.

Pattern B

B2 B3

Musical notation for Pattern B, measures B2 and B3. The notation is in treble clef, 3/4 time, and consists of six eighth notes per measure. Measure B2 contains notes G4, A4, B4, C5, B4, A4. Measure B3 contains notes G4, A4, B4, C5, B4, A4. Both measures are repeated twice.

B4 B5 B6

Musical notation for Pattern B, measures B4, B5, and B6. The notation is in treble clef, 3/4 time, and consists of six eighth notes per measure. Measure B4 contains notes G4, A4, B4, C5, B4, A4. Measure B5 contains notes G4, A4, B4, C5, B4, A4. Measure B6 contains notes G4, A4, B4, C5, B4, A4. All three measures are repeated twice.

Pattern C

C2 C3

Use fork F#

Musical notation for Pattern C, measures C2 and C3. The notation is in treble clef, 3/4 time, and consists of six eighth notes per measure. Measure C2 contains notes G4, A4, B4, C5, B4, A4. Measure C3 contains notes G4, A4, B4, C5, B4, A4. Both measures are repeated twice. A note below the first measure reads "Use fork F#".

C4 C5 C6

Musical notation for Pattern C, measures C4, C5, and C6. The notation is in treble clef, 3/4 time, and consists of six eighth notes per measure. Measure C4 contains notes G4, A4, B4, C5, B4, A4. Measure C5 contains notes G4, A4, B4, C5, B4, A4. Measure C6 contains notes G4, A4, B4, C5, B4, A4. All three measures are repeated twice.

Pattern D

D2 D3

Musical notation for Pattern D, measures D2 and D3. The notation is in treble clef, 3/4 time, and consists of six eighth notes per measure. Measure D2 contains notes G4, A4, B4, C5, B4, A4. Measure D3 contains notes G4, A4, B4, C5, B4, A4. Both measures are repeated twice.

D4 D5 D6

Musical notation for Pattern D, measures D4, D5, and D6. The notation is in treble clef, 3/4 time, and consists of six eighth notes per measure. Measure D4 contains notes G4, A4, B4, C5, B4, A4. Measure D5 contains notes G4, A4, B4, C5, B4, A4. Measure D6 contains notes G4, A4, B4, C5, B4, A4. All three measures are repeated twice.

INSIDE THE CIRCLE: A PROVEN METHOD FOR A SUCCESSFUL MARCHING BAND

WOODWIND CHAPTER: CLARINET PART (2nd ed.)

by Matt and Ben Harloff

Fingering Exercises: 6 Note Cells

Pattern E

Two measures of music for Pattern E. Measure E2 starts on E4 and contains the notes E4, F#4, G4, A4, B4, C5. Measure E3 starts on E4 and contains the notes E4, F#4, G4, A4, B4, C5. Both measures are marked with a repeat sign and a double bar line.

E4

Three measures of music for Pattern E. Measure E4 starts on E4 and contains the notes E4, F#4, G4, A4, B4, C5. Measure E5 starts on E4 and contains the notes E4, F#4, G4, A4, B4, C5. Measure E6 starts on E4 and contains the notes E4, F#4, G4, A4, B4, C5. All measures are marked with a repeat sign and a double bar line.

Pattern F

Three measures of music for Pattern F. Measure F2 starts on F4 and contains the notes F4, G4, A4, B4, C5, D5. Measure F3 starts on F4 and contains the notes F4, G4, A4, B4, C5, D5. Measure F4 starts on F4 and contains the notes F4, G4, A4, B4, C5, D5. All measures are marked with a repeat sign and a double bar line.

F5

Four measures of music for Pattern F. Measure F5 starts on F4 and contains the notes F4, G4, A4, B4, C5, D5. Measure F6 starts on F4 and contains the notes F4, G4, A4, B4, C5, D5. Measure F7 starts on F4 and contains the notes F4, G4, A4, B4, C5, D5. Measure F8 starts on F4 and contains the notes F4, G4, A4, B4, C5, D5. All measures are marked with a repeat sign and a double bar line.

F9

Four measures of music for Pattern F. Measure F9 starts on F4 and contains the notes F4, G4, A4, B4, C5, D5. Measure F10 starts on F4 and contains the notes F4, G4, A4, B4, C5, D5. Measure F11 starts on F4 and contains the notes F4, G4, A4, B4, C5, D5. Measure F12 starts on F4 and contains the notes F4, G4, A4, B4, C5, D5. All measures are marked with a repeat sign and a double bar line.

Pattern G

Three measures of music for Pattern G. Measure G2 starts on G4 and contains the notes G4, A4, B4, C5, D5, E5. Measure G3 starts on G4 and contains the notes G4, A4, B4, C5, D5, E5. Measure G4 starts on G4 and contains the notes G4, A4, B4, C5, D5, E5. All measures are marked with a repeat sign and a double bar line.

G5

Four measures of music for Pattern G. Measure G5 starts on G4 and contains the notes G4, A4, B4, C5, D5, E5. Measure G6 starts on G4 and contains the notes G4, A4, B4, C5, D5, E5. Measure G7 starts on G4 and contains the notes G4, A4, B4, C5, D5, E5. Measure G8 starts on G4 and contains the notes G4, A4, B4, C5, D5, E5. All measures are marked with a repeat sign and a double bar line.

G9

Four measures of music for Pattern G. Measure G9 starts on G4 and contains the notes G4, A4, B4, C5, D5, E5. Measure G10 starts on G4 and contains the notes G4, A4, B4, C5, D5, E5. Measure G11 starts on G4 and contains the notes G4, A4, B4, C5, D5, E5. Measure G12 starts on G4 and contains the notes G4, A4, B4, C5, D5, E5. All measures are marked with a repeat sign and a double bar line.

INSIDE THE CIRCLE: A PROVEN METHOD FOR A SUCCESSFUL MARCHING BAND

WOODWIND CHAPTER: CLARINET PART (2nd ed.)

by Matt and Ben Harloff

Fingering Exercises: 6 Note Cells

Pattern H

H2

H3

H4



H5

H6

H7

H8



H9

H10

H11

H12



Pattern I

I2

I3

I4



I5

I6

I7

I8

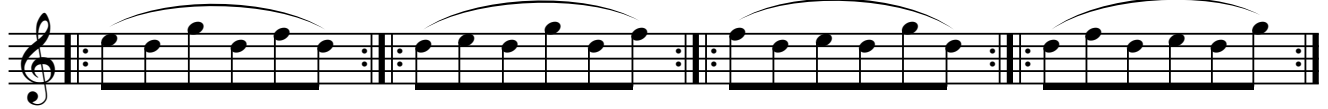


I9

I10

I11

I12



Pattern J

J2

J3

J4



J5

J6

J7

J8

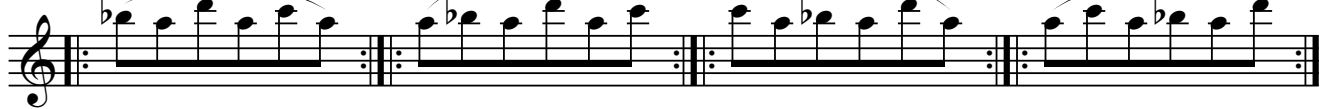


J9

J10

J11

J12



INSIDE THE CIRCLE: A PROVEN METHOD FOR A SUCCESSFUL MARCHING BAND

WOODWIND CHAPTER: CLARINET PART (2nd ed.)

by Matt and Ben Harloff

Fingering Exercises: 6 Note Cells

Pattern K

Pattern K consists of four measures, each containing a six-note cell. The notes are G4, A4, B4, C5, D5, and E5. Each measure is separated by a double bar line with repeat dots. The notes are beamed together and have a slur above them.

K5 K6 K7 K8

Pattern K continues with measures K5, K6, K7, and K8. Each measure contains a six-note cell with notes G4, A4, B4, C5, D5, and E5, beamed together and slurred.

K9 K10 K11 K12

Pattern K concludes with measures K9, K10, K11, and K12. Each measure contains a six-note cell with notes G4, A4, B4, C5, D5, and E5, beamed together and slurred.

Pattern L

Pattern L consists of four measures, each containing a six-note cell. The notes are G4, A4, B4, C5, D5, and E5. The second measure (L2) includes a flat (b) under the B4 note. Each measure is separated by a double bar line with repeat dots. The notes are beamed together and have a slur above them.

L5 L6 L7 L8

Pattern L continues with measures L5, L6, L7, and L8. Each measure contains a six-note cell with notes G4, A4, B4, C5, D5, and E5. The second measure (L6) includes a flat (b) under the B4 note. The notes are beamed together and slurred.

L9 L10 L11 L12

Pattern L concludes with measures L9, L10, L11, and L12. Each measure contains a six-note cell with notes G4, A4, B4, C5, D5, and E5. The second measure (L10) includes a flat (b) under the B4 note. The notes are beamed together and slurred.

# Trill Exercises

Key of Eb Trills

Eb #1

First line of musical notation for exercise Eb #1. It features a treble clef, a key signature of one flat (Bb), and a common time signature (C). The melody consists of eighth notes with trills. The first four measures are grouped by a slur and each has a '3' below it, indicating a triplet. The final four measures are also grouped by a slur.

Second line of musical notation for exercise Eb #1. It continues the melody from the first line. The first four measures are grouped by a slur and each has a '3' below it, indicating a triplet. The final four measures are also grouped by a slur.

Third line of musical notation for exercise Eb #1. It continues the melody from the second line. The first four measures are grouped by a slur and each has a '3' below it, indicating a triplet. The final four measures are also grouped by a slur.

Eb #2

First line of musical notation for exercise Eb #2. It features a treble clef, a key signature of one flat (Bb), and a common time signature (C). The melody consists of eighth notes with trills. The first four measures are grouped by a slur and each has a '3' below it, indicating a triplet. The final four measures are also grouped by a slur.

Second line of musical notation for exercise Eb #2. It continues the melody from the first line. The first four measures are grouped by a slur and each has a '3' below it, indicating a triplet. The final four measures are also grouped by a slur.

Third line of musical notation for exercise Eb #2. It continues the melody from the second line. The first four measures are grouped by a slur and each has a '3' below it, indicating a triplet. The final four measures are also grouped by a slur.

INSIDE THE CIRCLE: A PROVEN METHOD FOR A SUCCESSFUL MARCHING BAND

WOODWIND CHAPTER: CLARINET PART (2nd ed.)

by Matt and Ben Harloff

Trill Exercises

E♭ #3

E♭ #4

INSIDE THE CIRCLE: A PROVEN METHOD FOR A SUCCESSFUL MARCHING BAND

WOODWIND CHAPTER: CLARINET PART (2nd ed.)

by Matt and Ben Harloff

Trill Exercises

E♭ #5

The first staff of music for Exercise Eb #5 shows a trill starting on G4, moving up to A4, B4, and C5. It consists of four groups of eighth notes, each marked with a '3' for triplet. The second staff continues the trill with eight more groups of eighth notes, also marked with '3'. The third staff concludes the exercise with a final group of eighth notes marked '3', followed by a whole note G4.

E♭ #6

The first staff of music for Exercise Eb #6 shows a trill starting on G4, moving up to A4, B4, and C5. It consists of four groups of eighth notes, each marked with a '3' for triplet. The second staff continues the trill with eight more groups of eighth notes, also marked with '3'. The third staff concludes the exercise with a final group of eighth notes marked '3', followed by a whole note G4.



INSIDE THE CIRCLE: A PROVEN METHOD FOR A SUCCESSFUL MARCHING BAND

WOODWIND CHAPTER: CLARINET PART (2nd ed.)

by Matt and Ben Harloff

Trill Exercises

E♭ #7

First line of musical notation for Eb #7 trill exercise. It features a treble clef, a key signature of one flat (Bb), and a common time signature. The melody consists of two phrases, each starting with a trill (marked with a '3') and followed by a series of eighth notes. A slur covers the entire first phrase.

Second line of musical notation for Eb #7 trill exercise. It continues the melody from the first line with a series of eighth notes, each starting with a trill (marked with a '3'). A slur covers the entire line.

Third line of musical notation for Eb #7 trill exercise. It continues the melody from the second line with a series of eighth notes, each starting with a trill (marked with a '3'). A slur covers the entire line, ending with a final note.

Key of F Trills

F #1

First line of musical notation for F #1 trill exercise. It features a treble clef, a key signature of one sharp (F#), and a common time signature. The melody consists of two phrases, each starting with a trill (marked with a '3') and followed by a series of eighth notes. A slur covers the entire first phrase.

Second line of musical notation for F #1 trill exercise. It continues the melody from the first line with a series of eighth notes, each starting with a trill (marked with a '3'). A slur covers the entire line.

Third line of musical notation for F #1 trill exercise. It continues the melody from the second line with a series of eighth notes, each starting with a trill (marked with a '3'). A slur covers the entire line, ending with a final note.

INSIDE THE CIRCLE: A PROVEN METHOD FOR A SUCCESSFUL MARCHING BAND

WOODWIND CHAPTER: CLARINET PART (2nd ed.)

by Matt and Ben Harloff

Trill Exercises

F #2

Trill Exercise F #2 consists of three staves of music in treble clef with a key signature of one sharp (F#). The first staff contains two measures of trills, each marked with a '3' below. The second staff contains two measures of trills, each marked with a '3' below. The third staff contains two measures of trills, each marked with a '3' below, followed by a whole note on the final line of the staff.

F #3

Trill Exercise F #3 consists of three staves of music in treble clef with a key signature of one sharp (F#). The first staff contains two measures of trills, each marked with a '3' below. The second staff contains two measures of trills, each marked with a '3' below. The third staff contains two measures of trills, each marked with a '3' below, followed by a whole note on the final line of the staff.

INSIDE THE CIRCLE: A PROVEN METHOD FOR A SUCCESSFUL MARCHING BAND

WOODWIND CHAPTER: CLARINET PART (2nd ed.)

by Matt and Ben Harloff

Trill Exercises

F #4

F #5

INSIDE THE CIRCLE: A PROVEN METHOD FOR A SUCCESSFUL MARCHING BAND

WOODWIND CHAPTER: CLARINET PART (2nd ed.)

by Matt and Ben Harloff

Trill Exercises

F #6

Trill Exercise F #6 consists of three staves of music in treble clef with a key signature of one sharp (F#). The first staff contains two measures of trills, each marked with a '3' below the notes. The second staff contains two measures of trills, each marked with a '3'. The third staff contains two measures of trills, each marked with a '3', followed by a final measure with a whole note and a fermata.

F #7

Trill Exercise F #7 consists of three staves of music in treble clef with a key signature of one sharp (F#). The first staff contains two measures of trills, each marked with a '3' below the notes. The second staff contains two measures of trills, each marked with a '3'. The third staff contains two measures of trills, each marked with a '3', followed by a final measure with a whole note and a fermata.

INSIDE THE CIRCLE: A PROVEN METHOD FOR A SUCCESSFUL MARCHING BAND

WOODWIND CHAPTER: CLARINET PART (2nd ed.)

by Matt and Ben Harloff

Trill Exercises

Trill Eb Major Chord

Musical notation for the Trill Eb Major Chord exercise. It features a treble clef, a key signature of one flat (Bb), and a 2/4 time signature. The exercise begins with a quarter rest, followed by a quarter note Eb, a half note Eb, and a whole note Eb. The main part of the exercise is a trill over the Eb chord, indicated by a wavy line above the staff and a trill symbol (tr) at the start. The trill consists of 16 groups of eighth notes, each group containing the notes Eb, Gb, and Bb. The exercise concludes with a quarter note Eb, a half note Eb, and a whole note Eb.

Trill Bb Major Chord

Musical notation for the Trill Bb Major Chord exercise. It features a treble clef, a key signature of two flats (Bb, Eb), and a 2/4 time signature. The exercise begins with a quarter rest, followed by a quarter note Bb, a half note Bb, and a whole note Bb. The main part of the exercise is a trill over the Bb chord, indicated by a wavy line above the staff and a trill symbol (tr) at the start. The trill consists of 16 groups of eighth notes, each group containing the notes Bb, D, and F. The exercise concludes with a quarter note Bb, a half note Bb, and a whole note Bb.

Trill F Major Chord

Musical notation for the Trill F Major Chord exercise. It features a treble clef, a key signature of one sharp (F#), and a 2/4 time signature. The exercise begins with a quarter rest, followed by a quarter note F, a half note F, and a whole note F. The main part of the exercise is a trill over the F chord, indicated by a wavy line above the staff and a trill symbol (tr) at the start. The trill consists of 16 groups of eighth notes, each group containing the notes F, Ab, and C. The exercise concludes with a quarter note F, a half note F, and a whole note F.

Trill C Major Chord

Musical notation for the Trill C Major Chord exercise. It features a treble clef, a key signature of two sharps (F#, C#), and a 2/4 time signature. The exercise begins with a quarter rest, followed by a quarter note C, a half note C, and a whole note C. The main part of the exercise is a trill over the C chord, indicated by a wavy line above the staff and a trill symbol (tr) at the start. The trill consists of 16 groups of eighth notes, each group containing the notes C, Eb, and G. The exercise concludes with a quarter note C, a half note C, and a whole note C.

# Intonation Exercises

## Fundamental Tuning Notes

Adjust at the Middle of the Clarinet

Adjust at the Barrel

Adjust at the Bell

Adjust at the Middle of the Clarinet

## Bb Tuning (Equal Temperament)

## Bb Tuning (Just Intonation)

0

+4

-14

-2

+2

-15

-12

0

5: +2

3: -14

1: 0

5: +2

3: +15

1: 0

INSIDE THE CIRCLE: A PROVEN METHOD FOR A SUCCESSFUL MARCHING BAND

WOODWIND CHAPTER: CLARINET PART (2nd ed.)

by Matt and Ben Harloff

Intonation Exercises

F Tuning (Equal Temperament)

Musical notation for F Tuning (Equal Temperament) in treble clef with a key signature of one sharp (F#). The staff contains eight measures of music, each with a whole note chord. The notes in each measure are: 1) F#4, A4, C5; 2) F#4, A4, C5; 3) F#4, A4, C5; 4) F#4, A4, C5; 5) F#4, A4, C5; 6) F#4, A4, C5; 7) F#4, A4, C5; 8) F#4, A4, C5.

F Tuning (Just Intonation)

Musical notation for F Tuning (Just Intonation) in treble clef with a key signature of one sharp (F#). The staff contains four measures of music. The notes in each measure are: 1) F#4, A4, C5; 2) F#4, A4, C5; 3) F#4, A4, C5; 4) F#4, A4, C5. Below the staff are the following intonation adjustments: 0, +4, -14, -2.

Musical notation for F Tuning (Just Intonation) in treble clef with a key signature of one sharp (F#). The staff contains four measures of music. The notes in each measure are: 1) F#4, A4, C5; 2) F#4, A4, C5; 3) F#4, A4, C5; 4) F#4, A4, C5. Below the staff are the following intonation adjustments: +2, -15, -12.

Musical notation for F Tuning (Just Intonation) in treble clef with a key signature of one sharp (F#). The staff contains four measures of music. The notes in each measure are: 1) F#4, A4, C5; 2) F#4, A4, C5; 3) F#4, A4, C5; 4) F#4, A4, C5. Below the staff are the following intonation adjustments: 0, 5: +2, 3: -14, 1: 0, 5: +2, 3: +15, 1: 0.

Eb Tuning (Equal Temperament)

Musical notation for Eb Tuning (Equal Temperament) in treble clef with a key signature of one flat (Eb). The staff contains eight measures of music, each with a whole note chord. The notes in each measure are: 1) Eb4, G4, Bb4; 2) Eb4, G4, Bb4; 3) Eb4, G4, Bb4; 4) Eb4, G4, Bb4; 5) Eb4, G4, Bb4; 6) Eb4, G4, Bb4; 7) Eb4, G4, Bb4; 8) Eb4, G4, Bb4.

Eb Tuning (Just Intonation)

Musical notation for Eb Tuning (Just Intonation) in treble clef with a key signature of one flat (Eb). The staff contains four measures of music. The notes in each measure are: 1) Eb4, G4, Bb4; 2) Eb4, G4, Bb4; 3) Eb4, G4, Bb4; 4) Eb4, G4, Bb4. Below the staff are the following intonation adjustments: 0, +4, -14, -2.

Musical notation for Eb Tuning (Just Intonation) in treble clef with a key signature of one flat (Eb). The staff contains four measures of music. The notes in each measure are: 1) Eb4, G4, Bb4; 2) Eb4, G4, Bb4; 3) Eb4, G4, Bb4; 4) Eb4, G4, Bb4. Below the staff are the following intonation adjustments: +2, -15, -12.

Musical notation for Eb Tuning (Just Intonation) in treble clef with a key signature of one flat (Eb). The staff contains four measures of music. The notes in each measure are: 1) Eb4, G4, Bb4; 2) Eb4, G4, Bb4; 3) Eb4, G4, Bb4; 4) Eb4, G4, Bb4. Below the staff are the following intonation adjustments: 0, 5: +2, 3: -14, 1: 0, 5: +2, 3: +15, 1: 0.

# INSIDE THE CIRCLE: A PROVEN METHOD FOR A SUCCESSFUL MARCHING BAND

## WOODWIND CHAPTER: CLARINET PART (2nd ed.)

by Matt and Ben Harloff

### Intonation Exercises

#### Ab Tuning (Equal Temperament)

Musical notation for Ab Tuning (Equal Temperament) on a treble clef staff. The key signature has two flats (Bb and Eb). The notes are: Ab (circled), Bb (circled), C (circled), D (circled), Eb (circled), F (circled), G (circled), Ab (circled).

#### Ab Tuning (Just Intonation)

Musical notation for Ab Tuning (Just Intonation) on a treble clef staff. The key signature has two flats (Bb and Eb). The notes are: Ab (circled), Bb (circled), C (circled), D (circled), Eb (circled), F (circled), G (circled), Ab (circled). The notation includes fingerings and intonation adjustments: 0, +4, -14, -2, +2, -15, -12, and a final section with 5: +2, 3: -14, 1: 0, 5: +2, 3: +15, 1: 0.

#### C Tuning (Equal Temperament)

Musical notation for C Tuning (Equal Temperament) on a treble clef staff. The key signature has two sharps (F# and C#). The notes are: C (circled), D (circled), E (circled), F# (circled), G (circled), A (circled), B (circled), C (circled).

#### C Tuning (Just Intonation)

Musical notation for C Tuning (Just Intonation) on a treble clef staff. The key signature has two sharps (F# and C#). The notes are: C (circled), D (circled), E (circled), F# (circled), G (circled), A (circled), B (circled), C (circled). The notation includes fingerings and intonation adjustments: 0, +4, -14, -2, +2, -15, -12, and a final section with 5: +2, 3: -14, 1: 0, 5: +2, 3: +15, 1: 0.