

INSIDE THE CIRCLE:

A PROVEN METHOD FOR A SUCCESSFUL MARCHING BAND

By Matt and Ben Harloff

WOODWIND CHAPTER

OBOE PART

2nd Edition

TABLE OF CONTENTS

Mouthpiece Exercises.....Page 3

Embouchure Development.....Page 4

- Exercise #1-Perfect 4th, Low-High: Page 4
- Exercise #1a-Perfect 4th, Low-High: Page 4
- Exercise #2-Perfect 5th, Low-High: Page 4
- Exercise #2a-Perfect 5th, Low-High: Page 5
- Exercise #3-Minor 6th, Low-High: Page 5
- Exercise #3a-Minor 6th, Low-High: Page 5
- Exercise #4-Perfect 4th, High-Low: Page 6
- Exercise #4a-Perfect 4th, High-Low: Page 6
- Exercise #5-Perfect 5th, High-Low: Page 6
- Exercise #5a-Perfect 5th, High-Low: Page 7
- Exercise #6-Minor 6th, High-Low: Page 7
- Exercise #6a-Minor 6th, High-Low: Page 7

Fingering Exercises.....Page 8

- 4 Note Cells-Patterns A-L: Page 8-9
- 6 Note Cells-Patterns A-L: Page 10-13

Trill Exercises.....Page 14

- Key of Eb Trills: Page 14
- Key of F Trills: Page 17
- Trill Eb and Bb Major Chord: Page 21
- Trill F and C Major Chord: Page 21

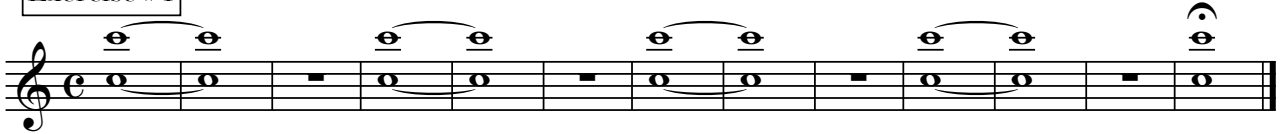
Intonation Exercises.....Page 22

- Fundamental Tuning Notes: Page 22
- Bb Tuning (Equal Temperament): Page 22
- Bb Tuning (Just Intonation): Page 22
- F Tuning (Equal Temperament and Just Intonation): Page 23
- Eb Tuning (Equal Temperament and Just Intonation): Page 23
- Ab Tuning (Equal Temperament and Just Intonation): Page 24
- C Tuning (Equal Temperament and Just Intonation): Page 24

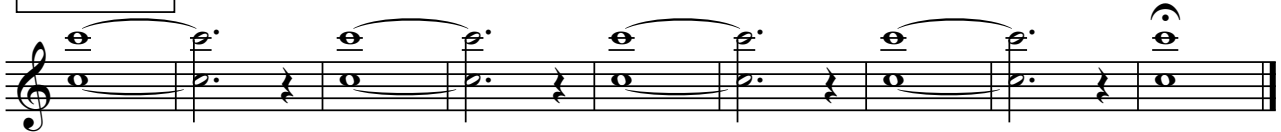
Mouthpiece Exercises

*Please note: All notes are concert pitch
The Oboe mouthpiece notes are multiphonic*

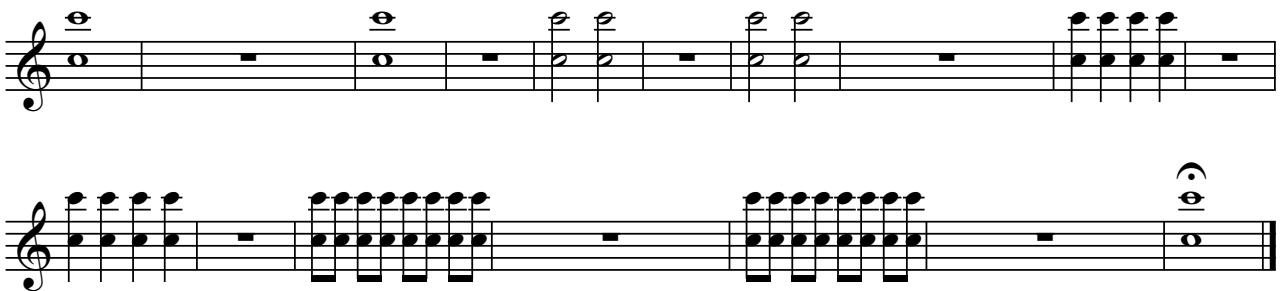
Exercise #1



Exercise #2



Exercise #3



Embouchure Development

Exercise #1 - Perfect 4th Low-High

Exercise #1 consists of two staves of music in 2/4 time, key of B-flat major. The first staff contains eight measures of eighth-note pairs: G4-A4, A4-Bb4, Bb4-C5, C5-Bb4, Bb4-A4, A4-G4, G4-F4, and F4-E4. The second staff contains eight measures: E4-D4, D4-C4, C4-Bb3, Bb3-A3, A3-G3, G3-F3, F3-E3, and E3-D3. Each pair is beamed together and followed by a quarter rest.

Exercise #1a - Perfect 4th Low-High

Exercise #1a consists of two staves of music in 2/4 time, key of B-flat major. The first staff contains eight measures of eighth-note pairs: G4-A4, A4-Bb4, Bb4-C5, C5-Bb4, Bb4-A4, A4-G4, G4-F4, and F4-E4. The second staff contains eight measures: E4-D4, D4-C4, C4-Bb3, Bb3-A3, A3-G3, G3-F3, F3-E3, and E3-D3. Each pair is beamed together and followed by a quarter rest.

Exercise #2 - Perfect 5th Low-High

Exercise #2 consists of two staves of music in 2/4 time, key of B-flat major. The first staff contains eight measures of eighth-note pairs: G4-A4, A4-Bb4, Bb4-C5, C5-Bb4, Bb4-A4, A4-G4, G4-F4, and F4-E4. The second staff contains eight measures: E4-D4, D4-C4, C4-Bb3, Bb3-A3, A3-G3, G3-F3, F3-E3, and E3-D3. Each pair is beamed together and followed by a quarter rest.

INSIDE THE CIRCLE: A PROVEN METHOD FOR A SUCCESSFUL MARCHING BAND

WOODWIND CHAPTER: OBOE PART (2nd ed.)

by Matt and Ben Harloff

Embouchure Development

Exercise #2a - Perfect 5th Low-High

Exercise #2a consists of two staves of music in the key of B-flat major. The first staff contains eight measures of music, each featuring a pair of notes (a perfect fifth) with a slur above them and a quarter rest below. The notes are: G4-A4, A4-B4, B4-C5, C5-B4, B4-A4, A4-G4, G4-F4, and F4-E4. The second staff continues with eight measures: E4-D4, D4-C4, C4-B3, B3-A3, A3-G3, G3-F3, F3-E3, and E3. The final note, E3, is held for a full measure.

Exercise #3 - Minor 6th Low-High

Exercise #3 consists of two staves of music in the key of B-flat major. The first staff contains eight measures of music, each featuring a pair of notes (a minor sixth) with a slur above them and a quarter rest below. The notes are: G4-F4, F4-E4, E4-D4, D4-C4, C4-B3, B3-A3, A3-G3, and G3-F3. The second staff continues with eight measures: F3-E3, E3-D3, D3-C3, C3-B2, B2-A2, A2-G2, G2-F2, and F2. The final note, F2, is held for a full measure.

Exercise #3a - Minor 6th Low-High

Exercise #3a consists of two staves of music in the key of B-flat major. The first staff contains eight measures of music, each featuring a pair of notes (a minor sixth) with a slur above them and a quarter rest below. The notes are: G4-F4, F4-E4, E4-D4, D4-C4, C4-B3, B3-A3, A3-G3, and G3-F3. The second staff continues with eight measures: F3-E3, E3-D3, D3-C3, C3-B2, B2-A2, A2-G2, G2-F2, and F2. The final note, F2, is held for a full measure.

INSIDE THE CIRCLE: A PROVEN METHOD FOR A SUCCESSFUL MARCHING BAND

WOODWIND CHAPTER: OBOE PART (2nd ed.)

by Matt and Ben Harloff

Embouchure Development

Exercise #4 - Perfect 4th High-Low

Exercise #4 consists of two staves of music in 2/4 time, featuring a key signature of two flats (B-flat and E-flat). The first staff contains eight measures of music, with notes grouped in pairs by slurs. The second staff contains eight measures, with the final measure ending in a double bar line.

Exercise #4a - Perfect 4th High-Low

Exercise #4a consists of two staves of music in 2/4 time, featuring a key signature of two flats. The first staff contains eight measures of music, with notes grouped in pairs by slurs. The second staff contains eight measures, with the final measure ending in a double bar line.

Exercise #5 - Perfect 5th High-Low

Exercise #5 consists of two staves of music in 2/4 time, featuring a key signature of two flats. The first staff contains eight measures of music, with notes grouped in pairs by slurs. The second staff contains eight measures, with the final measure ending in a double bar line.

INSIDE THE CIRCLE: A PROVEN METHOD FOR A SUCCESSFUL MARCHING BAND

WOODWIND CHAPTER: OBOE PART (2nd ed.)

by Matt and Ben Harloff

Embouchure Development

Exercise #5a - Perfect 5th High-Low

Exercise #5a - Perfect 5th High-Low. This exercise consists of two staves of music in 2/4 time, featuring a key signature of one flat (B-flat). The melody is composed of eighth notes with slurs, alternating between a higher pitch and a lower pitch to emphasize a perfect fifth interval. The first staff contains 10 measures, and the second staff contains 10 measures, ending with a final note marked with a fermata.

Exercise #6 - Minor 6th High-Low

Exercise #6 - Minor 6th High-Low. This exercise consists of two staves of music in 2/4 time, featuring a key signature of one flat (B-flat). The melody is composed of eighth notes with slurs, alternating between a higher pitch and a lower pitch to emphasize a minor sixth interval. The first staff contains 10 measures, and the second staff contains 10 measures, ending with a final note marked with a fermata.

Exercise #6a - Minor 6th High-Low

Exercise #6a - Minor 6th High-Low. This exercise consists of two staves of music in 2/4 time, featuring a key signature of one flat (B-flat). The melody is composed of eighth notes with slurs, alternating between a higher pitch and a lower pitch to emphasize a minor sixth interval. The first staff contains 10 measures, and the second staff contains 10 measures, ending with a final note marked with a fermata.

Fingering Exercises: 4 Note Cells

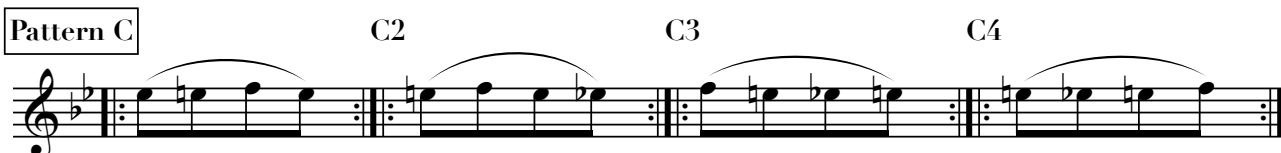
Pattern A A2 A3 A4



Pattern B B2 B3 B4



Pattern C C2 C3 C4



Pattern D D2 D3 D4



Pattern E E2 E3 E4



Pattern F F2 F3 F4



INSIDE THE CIRCLE: A PROVEN METHOD FOR A SUCCESSFUL MARCHING BAND

WOODWIND CHAPTER: OBOE PART (2nd ed.)

by Matt and Ben Harloff

Fingering Exercises: 4 Note Cells

Pattern G

G2 G3 G4

Pattern H

H2 H3 H4

Pattern I

I2 I3 I4

Pattern J

J2 J3 J4

Pattern K

K2 K3 K4

Pattern L

L2 L3 L4

Fingering Exercises: 6 Note Cells

Pattern A

A2

A3

A4

A5

A6

Pattern B

B2

B3

B4

B5

B6

Pattern C

C2

C3

Use fork F#

C4

C5

C6

Pattern D

D2

D3

D4

D5

D6

INSIDE THE CIRCLE: A PROVEN METHOD FOR A SUCCESSFUL MARCHING BAND

WOODWIND CHAPTER: OBOE PART (2nd ed.)

by Matt and Ben Harloff

Fingering Exercises: 6 Note Cells

Pattern E

Two measures of music for Pattern E. The first measure is labeled E2 and the second is labeled E3. Both measures contain a sequence of six notes: E4, F4, G4, A4, B4, and C5, with a slur over the entire sequence. Each measure is repeated twice, indicated by double bar lines with repeat dots.

E4

Two measures of music for Pattern E. The first measure is labeled E4 and the second is labeled E6. Both measures contain a sequence of six notes: E4, F4, G4, A4, B4, and C5, with a slur over the entire sequence. Each measure is repeated twice, indicated by double bar lines with repeat dots.

Pattern F

Three measures of music for Pattern F. The first measure is labeled F2, the second is labeled F3, and the third is labeled F4. Each measure contains a sequence of six notes: F4, G4, A4, B4, C5, and D5, with a slur over the entire sequence. Each measure is repeated twice, indicated by double bar lines with repeat dots.

F5

Four measures of music for Pattern F. The first measure is labeled F5, the second is labeled F6, the third is labeled F7, and the fourth is labeled F8. Each measure contains a sequence of six notes: F4, G4, A4, B4, C5, and D5, with a slur over the entire sequence. Each measure is repeated twice, indicated by double bar lines with repeat dots.

F9

Four measures of music for Pattern F. The first measure is labeled F9, the second is labeled F10, the third is labeled F11, and the fourth is labeled F12. Each measure contains a sequence of six notes: F4, G4, A4, B4, C5, and D5, with a slur over the entire sequence. Each measure is repeated twice, indicated by double bar lines with repeat dots.

Pattern G

Three measures of music for Pattern G. The first measure is labeled G2, the second is labeled G3, and the third is labeled G4. Each measure contains a sequence of six notes: G4, A4, B4, C5, D5, and E5, with a slur over the entire sequence. Each measure is repeated twice, indicated by double bar lines with repeat dots.

G5

Four measures of music for Pattern G. The first measure is labeled G5, the second is labeled G6, the third is labeled G7, and the fourth is labeled G8. Each measure contains a sequence of six notes: G4, A4, B4, C5, D5, and E5, with a slur over the entire sequence. Each measure is repeated twice, indicated by double bar lines with repeat dots.

G9

Four measures of music for Pattern G. The first measure is labeled G9, the second is labeled G10, the third is labeled G11, and the fourth is labeled G12. Each measure contains a sequence of six notes: G4, A4, B4, C5, D5, and E5, with a slur over the entire sequence. Each measure is repeated twice, indicated by double bar lines with repeat dots.

INSIDE THE CIRCLE: A PROVEN METHOD FOR A SUCCESSFUL MARCHING BAND

WOODWIND CHAPTER: OBOE PART (2nd ed.)

by Matt and Ben Harloff

Fingering Exercises: 6 Note Cells

Pattern H

H2

H3

H4



H5

H6

H7

H8



H9

H10

H11

H12



Pattern I

I2

I3

I4



I5

I6

I7

I8



I9

I10

I11

I12



Pattern J

J2

J3

J4



J5

J6

J7

J8



J9

J10

J11

J12



INSIDE THE CIRCLE: A PROVEN METHOD FOR A SUCCESSFUL MARCHING BAND

WOODWIND CHAPTER: OBOE PART (2nd ed.)

by Matt and Ben Harloff

Fingering Exercises: 6 Note Cells

Pattern K

Pattern K consists of four measures, each containing a six-note cell. The notes are G4, A4, B4, C5, B4, A4. Each measure is repeated twice. The key signature has one flat (Bb).

K5

Pattern K continues with measures K5 through K8, each containing a six-note cell (G4, A4, B4, C5, B4, A4) repeated twice. The key signature has one flat (Bb).

K9

Pattern K concludes with measures K9 through K12, each containing a six-note cell (G4, A4, B4, C5, B4, A4) repeated twice. The key signature has one flat (Bb).

Pattern L

Pattern L consists of four measures, each containing a six-note cell. The notes are G4, A4, B4, C5, B4, A4. Each measure is repeated twice. The key signature has one flat (Bb).

L5

Pattern L continues with measures L5 through L8, each containing a six-note cell (G4, A4, B4, C5, B4, A4) repeated twice. The key signature has one flat (Bb).

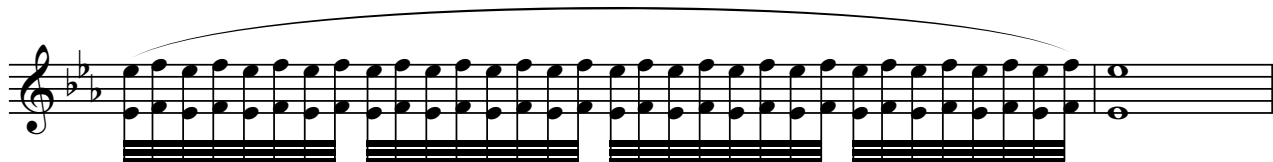
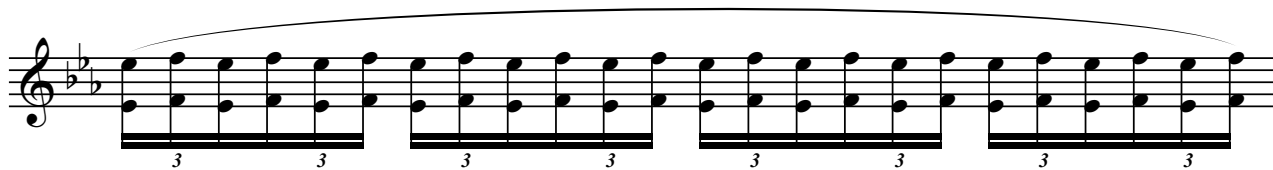
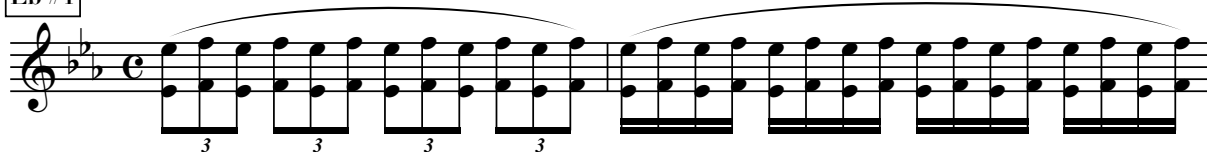
L9

Pattern L concludes with measures L9 through L12, each containing a six-note cell (G4, A4, B4, C5, B4, A4) repeated twice. The key signature has one flat (Bb).

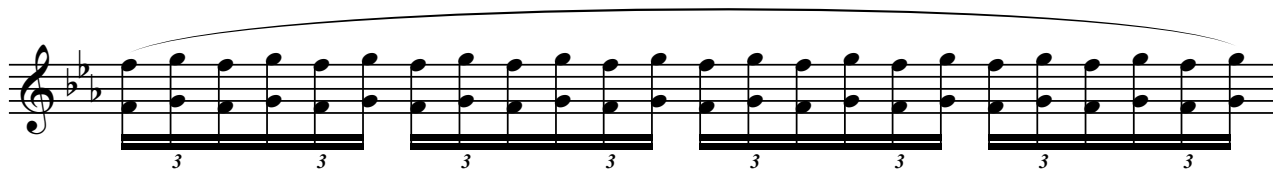
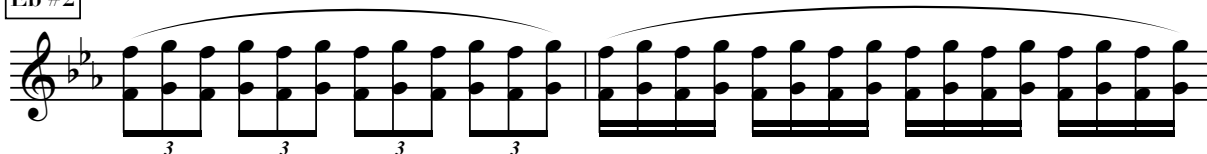
Trill Exercises

Key of Eb Trills

Eb #1



Eb #2



INSIDE THE CIRCLE: A PROVEN METHOD FOR A SUCCESSFUL MARCHING BAND
WOODWIND CHAPTER: OBOE PART (2nd ed.)
by Matt and Ben Harloff

Trill Exercises

E♭ #3

The first exercise, labeled 'Eb #3', is written in E-flat major (one flat) and 4/4 time. It consists of three staves of music. The first staff contains two measures of music, each with a slur over a triplet of eighth notes. The second staff contains two measures of music, each with a slur over a triplet of eighth notes. The third staff contains two measures of music, each with a slur over a triplet of eighth notes. The key signature is one flat (B-flat).

E♭ #4

The second exercise, labeled 'Eb #4', is written in E-flat major (one flat) and 4/4 time. It consists of three staves of music. The first staff contains two measures of music, each with a slur over a triplet of eighth notes. The second staff contains two measures of music, each with a slur over a triplet of eighth notes. The third staff contains two measures of music, each with a slur over a triplet of eighth notes. The key signature is one flat (B-flat).

INSIDE THE CIRCLE: A PROVEN METHOD FOR A SUCCESSFUL MARCHING BAND

WOODWIND CHAPTER: OBOE PART (2nd ed.)

by Matt and Ben Harloff

Trill Exercises

E♭ #5

E♭ #6

INSIDE THE CIRCLE: A PROVEN METHOD FOR A SUCCESSFUL MARCHING BAND

WOODWIND CHAPTER: OBOE PART (2nd ed.)

by Matt and Ben Harloff

Trill Exercises

E♭ #7

Three staves of musical notation for Eb #7 trill exercises. The first staff contains two measures of trills, each with four groups of three notes. The second staff contains two measures of trills, each with eight groups of three notes. The third staff contains two measures of trills, each with sixteen groups of three notes, ending with a whole note chord.

Key of F Trills

F #1

Three staves of musical notation for Key of F trill exercises. The first staff contains two measures of trills, each with four groups of three notes. The second staff contains two measures of trills, each with eight groups of three notes. The third staff contains two measures of trills, each with sixteen groups of three notes, ending with a whole note chord.

INSIDE THE CIRCLE: A PROVEN METHOD FOR A SUCCESSFUL MARCHING BAND

WOODWIND CHAPTER: OBOE PART (2nd ed.)

by Matt and Ben Harloff

Trill Exercises

F #2

Trill Exercise F #2 consists of three staves of music in bass clef with a key signature of one flat. The first staff contains two measures of trills, each marked with a '3' below. The second staff contains two measures of trills, each marked with a '3' below. The third staff contains two measures of trills, each marked with a '3' below, and ends with a whole note on the final line of the staff.

F #3

Trill Exercise F #3 consists of three staves of music in bass clef with a key signature of one flat. The first staff contains two measures of trills, each marked with a '3' below. The second staff contains two measures of trills, each marked with a '3' below. The third staff contains two measures of trills, each marked with a '3' below, and ends with a whole note on the final line of the staff.

INSIDE THE CIRCLE: A PROVEN METHOD FOR A SUCCESSFUL MARCHING BAND

WOODWIND CHAPTER: OBOE PART (2nd ed.)

by Matt and Ben Harloff

Trill Exercises

F #4

The first staff of music for exercise F #4 shows a trill starting on G4, moving up to A4, B4, and C5. It consists of four groups of eighth-note triplets, each marked with a '3' below it. The second staff continues the trill with another four groups of eighth-note triplets. The third staff concludes the exercise with a final group of eighth-note triplets followed by a whole note G4.

F #5

The first staff of music for exercise F #5 shows a trill starting on G4, moving up to A4, B4, and C5. It consists of four groups of eighth-note triplets, each marked with a '3' below it. The second staff continues the trill with another four groups of eighth-note triplets. The third staff concludes the exercise with a final group of eighth-note triplets followed by a whole note G4.

INSIDE THE CIRCLE: A PROVEN METHOD FOR A SUCCESSFUL MARCHING BAND

WOODWIND CHAPTER: OBOE PART (2nd ed.)

by Matt and Ben Harloff

Trill Exercises

F #6

The first staff of music for exercise F #6 begins with a treble clef, a key signature of one flat (Bb), and a common time signature. It contains two measures of trills, each marked with a '3' below the notes. The first measure has four trills, and the second has four. A slur spans the entire exercise. The second staff continues with eight trills, each marked with a '3'. The third staff continues with eight trills, each marked with a '3', and concludes with a whole note on the final line of the staff.

F #7

The first staff of music for exercise F #7 begins with a treble clef, a key signature of one flat (Bb), and a common time signature. It contains two measures of trills, each marked with a '3' below the notes. The first measure has four trills, and the second has four. A slur spans the entire exercise. The second staff continues with eight trills, each marked with a '3'. The third staff continues with eight trills, each marked with a '3', and concludes with a whole note on the final line of the staff.

INSIDE THE CIRCLE: A PROVEN METHOD FOR A SUCCESSFUL MARCHING BAND

WOODWIND CHAPTER: OBOE PART (2nd ed.)

by Matt and Ben Harloff

Trill Exercises

Trill Eb Major Chord

Musical notation for the Trill Eb Major Chord exercise. It begins with a treble clef, a key signature of two flats (Bb and Eb), and a common time signature. The first measure contains a half note Eb, followed by a half note chord of Eb major (Eb, Gb, Bb). The second measure contains a trill exercise starting with a half note Eb, indicated by a wavy line and a trill symbol. The trill consists of 16 groups of eighth notes, each group containing the notes Eb and Gb. The exercise concludes with a half note chord of Eb major (Eb, Gb, Bb).

Trill Bb Major Chord

Musical notation for the Trill Bb Major Chord exercise. It begins with a treble clef, a key signature of two flats (Bb and Eb), and a common time signature. The first measure contains a half note Bb, followed by a half note chord of Bb major (Bb, D, F). The second measure contains a trill exercise starting with a half note Bb, indicated by a wavy line and a trill symbol. The trill consists of 16 groups of eighth notes, each group containing the notes Bb and D. The exercise concludes with a half note chord of Bb major (Bb, D, F).

Trill F Major Chord

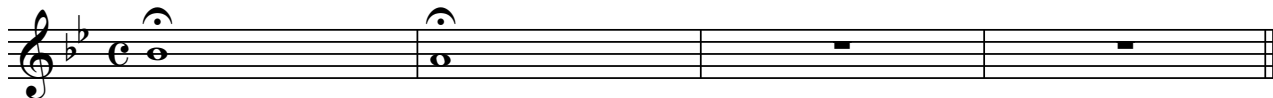
Musical notation for the Trill F Major Chord exercise. It begins with a treble clef, a key signature of one flat (Bb), and a common time signature. The first measure contains a half note F, followed by a half note chord of F major (F, Ab, C). The second measure contains a trill exercise starting with a half note F, indicated by a wavy line and a trill symbol. The trill consists of 16 groups of eighth notes, each group containing the notes F and Ab. The exercise concludes with a half note chord of F major (F, Ab, C).

Trill C Major Chord

Musical notation for the Trill C Major Chord exercise. It begins with a treble clef, a key signature of one flat (Bb), and a common time signature. The first measure contains a half note C, followed by a half note chord of C major (C, Eb, G). The second measure contains a trill exercise starting with a half note C, indicated by a wavy line and a trill symbol. The trill consists of 16 groups of eighth notes, each group containing the notes C and Eb. The exercise concludes with a half note chord of C major (C, Eb, G).

Intonation Exercises

Fundamental Tuning Notes



Bb Tuning (Equal Temperament)



Bb Tuning (Just Intonation)



INSIDE THE CIRCLE: A PROVEN METHOD FOR A SUCCESSFUL MARCHING BAND

WOODWIND CHAPTER: OBOE PART (2nd ed.)

by Matt and Ben Harloff

Intonation Exercises

F Tuning (Equal Temperament)

A musical staff in treble clef with a key signature of one flat (Bb). It contains eight measures of music, each featuring a half note chord. The notes in the chords are: F2, Bb2, D3, F3, Ab3, C4, E4, F4.

F Tuning (Just Intonation)

A musical staff in treble clef with a key signature of one flat (Bb). It contains eight measures of music. The first measure has a half note chord with a '0' below it. The second measure has a half note chord with a '+4' below it. The third measure has a half note chord with a '-14' below it. The fourth measure has a half note chord with a '-2' below it. The fifth, sixth, and seventh measures contain rests.

A musical staff in treble clef with a key signature of one flat (Bb). It contains eight measures of music. The first measure has a half note chord with a '+2' below it. The second measure has a half note chord with a '-15' below it. The third measure has a half note chord with a '-12' below it. The fourth, fifth, and sixth measures contain rests.

A musical staff in treble clef with a key signature of one flat (Bb). It contains eight measures of music. The first measure has a half note chord with a '0' below it. The second measure has a half note chord with a '5: +2', '3: -14', and '1: 0' below it. The third measure has a half note chord with a '5: +2', '3: +15', and '1: 0' below it. The fourth, fifth, and sixth measures contain rests.

Eb Tuning (Equal Temperament)

A musical staff in treble clef with a key signature of two flats (Bb, Eb). It contains eight measures of music, each featuring a half note chord. The notes in the chords are: Eb2, Ab2, Bb2, Eb3, Gb3, Ab3, Bb3, Eb4.

Eb Tuning (Just Intonation)

A musical staff in treble clef with a key signature of two flats (Bb, Eb). It contains eight measures of music. The first measure has a half note chord with a '0' below it. The second measure has a half note chord with a '+4' below it. The third measure has a half note chord with a '-14' below it. The fourth measure has a half note chord with a '-2' below it. The fifth, sixth, and seventh measures contain rests.

A musical staff in treble clef with a key signature of two flats (Bb, Eb). It contains eight measures of music. The first measure has a half note chord with a '+2' below it. The second measure has a half note chord with a '-15' below it. The third measure has a half note chord with a '-12' below it. The fourth, fifth, and sixth measures contain rests.

A musical staff in treble clef with a key signature of two flats (Bb, Eb). It contains eight measures of music. The first measure has a half note chord with a '0' below it. The second measure has a half note chord with a '5: +2', '3: -14', and '1: 0' below it. The third measure has a half note chord with a '5: +2', '3: +15', and '1: 0' below it. The fourth, fifth, and sixth measures contain rests.

INSIDE THE CIRCLE: A PROVEN METHOD FOR A SUCCESSFUL MARCHING BAND

WOODWIND CHAPTER: OBOE PART (2nd ed.)

by Matt and Ben Harloff

Intonation Exercises

Ab Tuning (Equal Temperament)

A musical staff in treble clef with a key signature of three flats (Bb, Eb, Ab) and a common time signature. It contains eight measures, each with a half note chord. The notes in each measure are: G3, F3, Eb3, Ab3, G3, F3, Eb3, Ab3.

Ab Tuning (Just Intonation)

A musical staff in treble clef with a key signature of three flats and a common time signature. It contains four measures with various rhythmic patterns and accidentals. Below the staff are the following intonation adjustments: 0, +4, -14, -2.

A musical staff in treble clef with a key signature of three flats and a common time signature. It contains four measures with various rhythmic patterns and accidentals. Below the staff are the following intonation adjustments: +2, -15, -12.

A musical staff in treble clef with a key signature of three flats and a common time signature. It contains four measures with various rhythmic patterns and accidentals. Below the staff are the following intonation adjustments: 0, 5: +2, 3: -14, 1: 0, 5: +2, 3: +15, 1: 0.

C Tuning (Equal Temperament)

A musical staff in treble clef with a key signature of one flat (Bb) and a common time signature. It contains eight measures, each with a half note chord. The notes in each measure are: C4, Bb3, Ab3, G3, C4, Bb3, Ab3, G3.

C Tuning (Just Intonation)

A musical staff in treble clef with a key signature of one flat and a common time signature. It contains four measures with various rhythmic patterns and accidentals. Below the staff are the following intonation adjustments: 0, +4, -14, -2.

A musical staff in treble clef with a key signature of one flat and a common time signature. It contains four measures with various rhythmic patterns and accidentals. Below the staff are the following intonation adjustments: +2, -15, -12.

A musical staff in treble clef with a key signature of one flat and a common time signature. It contains four measures with various rhythmic patterns and accidentals. Below the staff are the following intonation adjustments: 0, 5: +2, 3: -14, 1: 0, 5: +2, 3: +15, 1: 0.